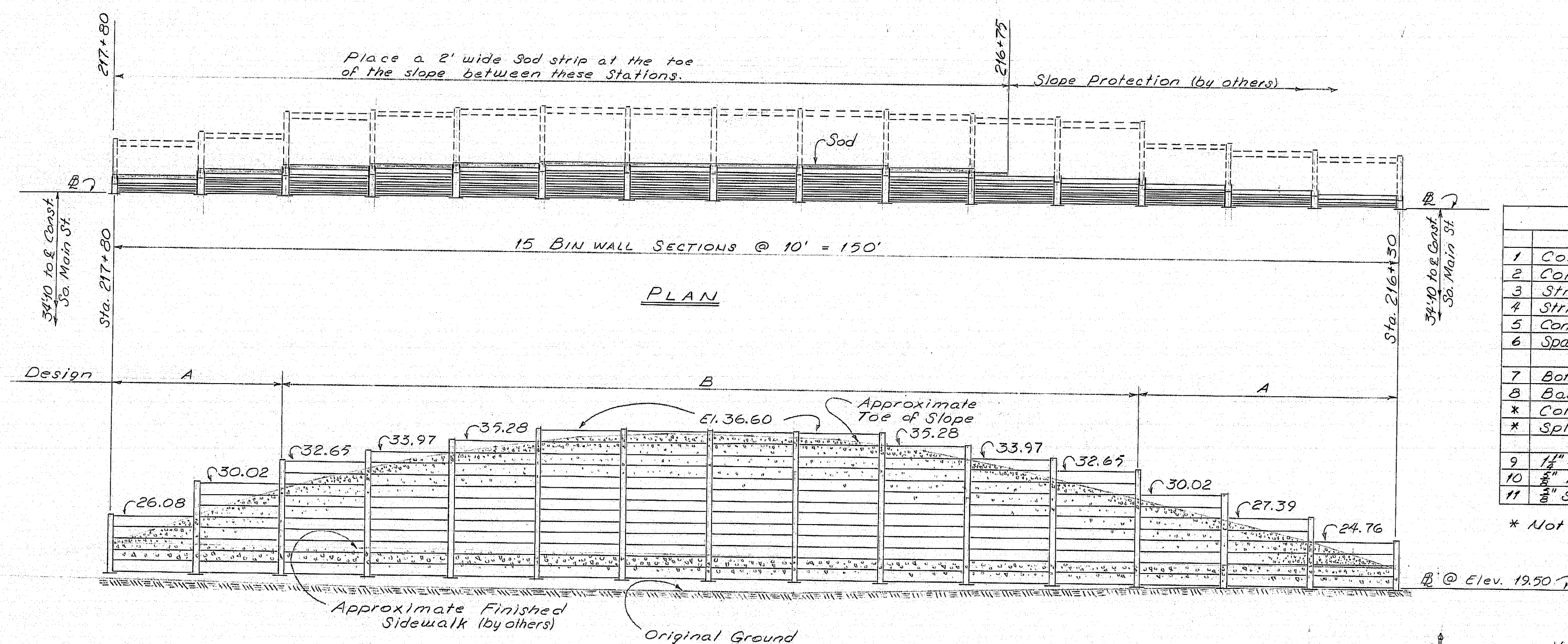
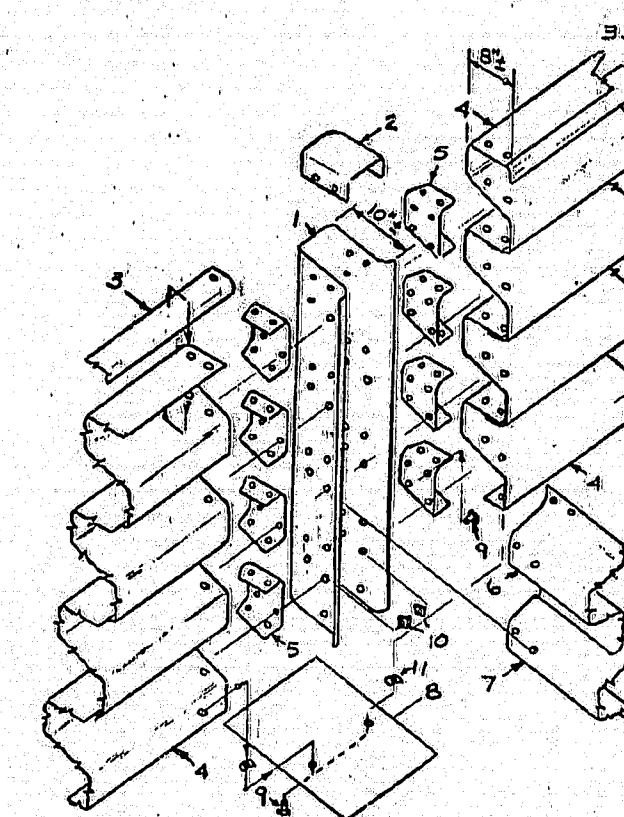
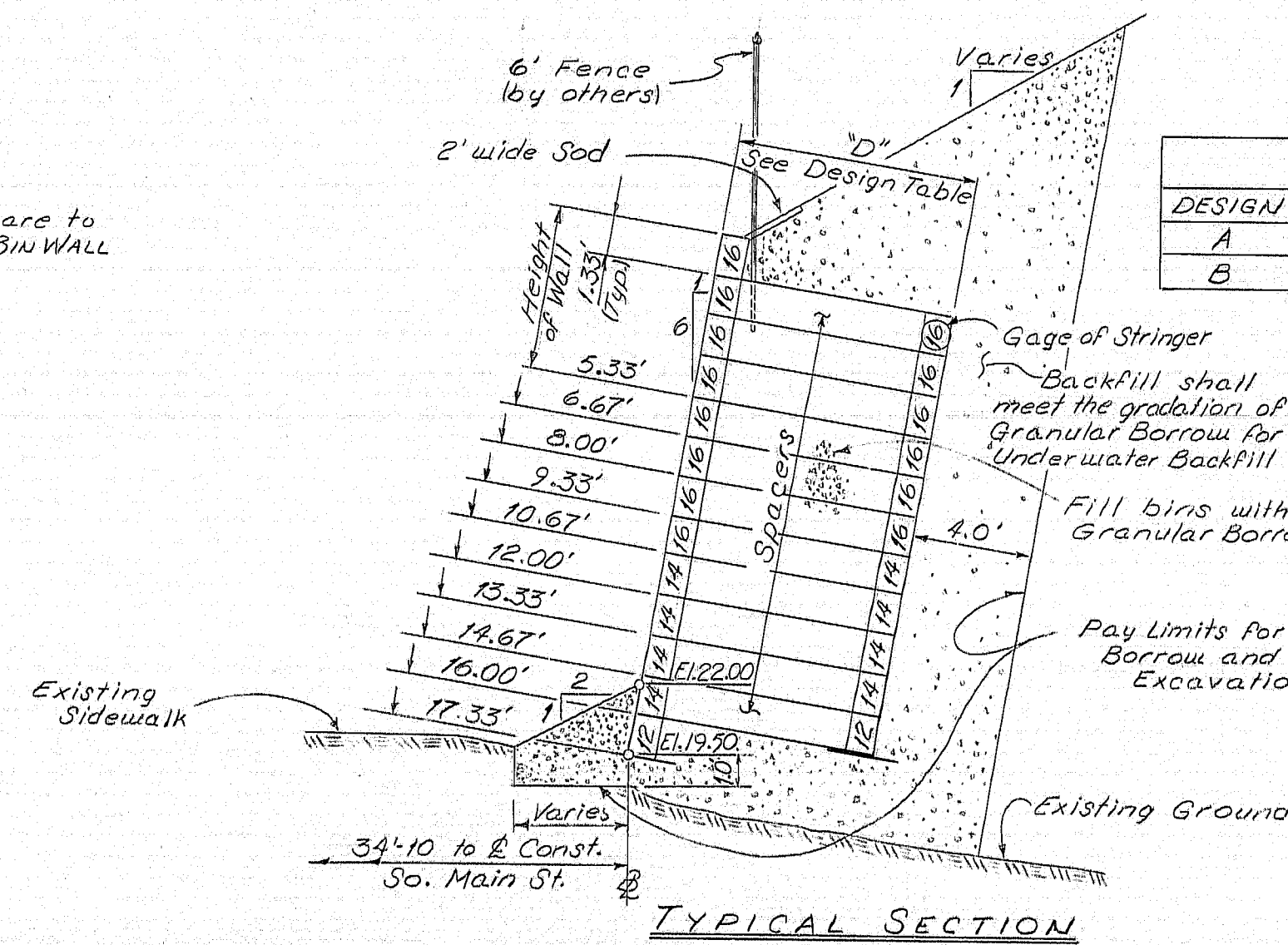


PROJECT DESIGN ENGINEER	DATE
BY: [Signature]	12/15/83
CHECKED: [Signature]	1/10/84
REVISIONS	
FIELD CHANGES	

44-102-2710



Note: The configuration of the bin wall will be subject to field review. The Contractor shall notify the Engineer, in writing, 30 days before ordering materials, to allow the Engineer sufficient time to provide detailed revisions.



BIN DETAIL
Exploded view of front panel joint of steel bin-type retaining wall as seen from the rear. Other wall member configurations may be used if they are of equal strength and are approved by the Engineer.

PARTS TABLE		
NAME	QTY	DESCRIPTION
1 Column	8	Vert. member connecting all other units
2 Column Cap	12	Cover for front column
3 Stringer Stiffener	8	Top flange protector
4 Stringer	See Design Table	Horiz. longitudinal members (front & rear)
5 Connecting Panel	8	Connector for attaching Stringers to Columns
6 Spacer	See Design Table	Transverse members separating front and rear columns
7 Bottom Spacer		Special bottom transverse member
8 Base Plate	1	Installation plate upon which column rests
* Column Splice	10	Connects Columns for higher walls
* Split Column	8	Connects rear stringer of thinner wall to transverse section of thicker wall.
9 1/4" x 1/2" Bolts		
10 1/2" Nuts		
11 1/2" Spring Nuts		

* Not shown

DESIGN TABLE			
DESIGN 'D' DIMENSION	SPACER LENGTH	SPACER GAGE	
A 5.5'	5.2'	16	
B 7.7'	7.4'	16	

Note: Preparation of foundation, material gradation, and construction of the embankment shall be as described for Abutments and Piers under subsection 203.13 of the Standard Specifications.

97-354

STATE OF MAINE
DEPARTMENT OF TRANSPORTATION

SPECIAL DETAIL
METAL BIN WALL
at Right of
SOUTH MAIN STREET

SHEET OF AUGUSTA, MAINE